

COLLABORATION

MOVING STRATEGY TO PRACTICE!

Quotes from Grow Along with Me Staff

“Seamless access is awesome; one point of entry into services helps parents and decreases confusion.”

“As a parent educator there is added value/strength in being a part of this [GAWM]: resulted in it [being] easier to present ideas, non-threatening partnering with people you have met through trainings, screenings, and local events. I know of great variety of supports available to parents and have confidence and knowledge about where to send them i.e. groups, website, newsletters.”

“It is exciting to see the momentum and [seeing] so many different agencies/ people on the same page. EXCITING!”

KEY RESEARCH FINDINGS

- The Grow Along with Me project has served as the foundation to plan, deliver and evaluate early childhood services. **Duplication has been reduced**, available resources are optimized and **access has been improved**.
- Shared philosophy and goals, strong leadership, mutual support and accountability, the diverse skill set of project partners, and participatory approach to evaluation were seen as the foundation for **effective team functioning**.

Foundational Factors	Jun-08	Sep-09
Shared vision and goals	71.0	88.9
Strong & shared leadership	80.4	88.6
Shared problem-solving	64.3	81.8
Mutual support	82.3	90.9
Mutual accountability	88.9	87.9

Foundational Factor ratings by the GAWM Steering Committee: June 2008 & September 2009.

- Inter-organizational **communication** was deemed a priority at both the formative and summative phases of the project.
- Collaboration allows for **flexibility** and **adaptability** throughout the project. Collaborative meetings create an environment to share expertise and resources, maximize service availability and increase access to evidence-based services for families across the region.
- Collaboration benefits from the **diversity** of the group members while bridging Ministerial, geographic and professional boundaries.

GROW ALONG WITH ME ACTIVITIES

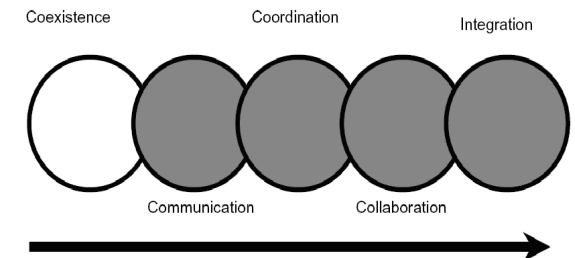
Collaboration: *“A process to reach goals that cannot be achieved acting singly (or at a minimum, cannot be reached efficiently). Collaboration is a means to an end, not an end in itself; the process needs to be effective to achieve successful end results” (Hasnain-Wynia et al., 2003, p. 43-44S).*

Since the first meeting to develop the Grow Along with Me project proposal in 2006, there has been a strong focus on collaboration.

Upon project start up, the GAWM Steering Committee developed Terms of Reference and began meeting on a monthly basis. Three subcommittees were also formed with membership from both steering committee members and front-line staff. These included: Evaluation; Communication; and Training

Additionally, front-line staff involved in the project began meeting regularly in the second year to share information, discuss challenges and jointly schedule and plan community educational events.

We are moving in the right direction!



Growing towards Integration (adapted from the Early Years Study 2: Putting Science into Action, 2007.)

REPORTS FOR MORE INFORMATION

Building Capacity: A Foundation for Success
Service Provider Survey

DEVELOPMENTAL CHECKUPS

PREVENTION IN ACTION!

Quotes from Parents

“[I felt] great—it was nice to know that my son is where he should be and that there are people there to help if he wasn’t.”

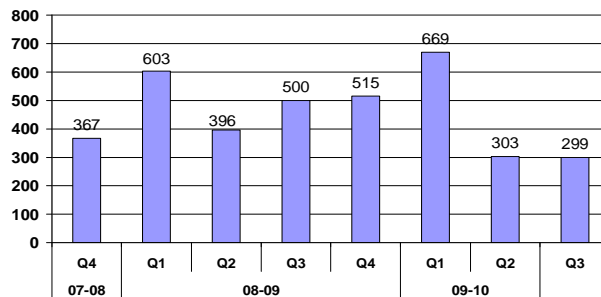
“I guess it’s really helpful to know where your child should be at, at what age. If you are a new parent, you don’t really know what to look for, what’s normal and what’s not. I think a lot of new parents would just assume everything is on track, so it’s good to check it out and learn”.

“Good in a lot of ways. If you catch problems early you can do something.”

KEY RESEARCH FINDINGS

- **3652 ASQs (18 – 36 months) were completed between January 01, 2008 and December 31, 2009.** Additionally, 4261 ASQs were completed for children between 4–16 months and 42–60 months of age between January 01, 2008 and September 31, 2009.

Number of
18 - 36 Month ASQs
completed by quarter 2008-10



- **It is important to develop a trusting relationship with parents through:**

- ◆ Providing a comfortable environment
- ◆ Not rushing discussions with the parent
- ◆ Using non-judgmental language
- ◆ Acknowledging the parent as the expert regarding their child

- **Parents and professionals have identified the ASQ as being an important and effective tool for:**

- ◆ **Learning about child development milestones.** 61% of parents reported that they learned something about their child’s development as a result of completing the ASQ.
- ◆ **Reassuring parents about their child’s development.** 83% of parents reported positive experiences with the ASQ, mostly because it allowed them to appreciate that their child was developing in a normal way.
- ◆ **Providing information and guidance on ways to support and optimize child development.** 83.3% of PHNs and 76.9% of multidisciplinary staff reported that they were confident that services provided to families in response to the ASQ were appropriate.
- ◆ **Identifying children who require further developmental assessment.** Between Q1 08-09 and Q2 09-10, the average rate of referral for further assessment was 17%. Through a universal approach, the total number of children completing the ASQ increased while the rate of referral decreased.

GROW ALONG WITH ME ACTIVITIES

Developmental Checkups are provided through the:

- ◆ 18 Month Well-Child Clinic Visit,
- ◆ Parents as Teachers Program,
- ◆ Parent Link Centres, and
- ◆ Community Developmental Check-up Blitz held in partnership with the local school division in March/April each year.

Additionally, Developmental Checkups are provided at the 6 month Well-Child Clinic Visit.

Training events were held with Public Health Nurses, GAWM partner staff and regulated child care facility staff. In-services focused on the use of the ASQ, sharing concerns with parents, referral process and information about how to support child development.

REPORTS FOR MORE INFORMATION

Grow Along with Me Parent Focus Groups

Parent Satisfaction: Telephone Interviews Referred and not referred Time 1 and Time 2

GAWM Client Pathway Audit.

ASQ: Validity and Reliability Audit

Service Provider Survey

Quarterly Reports

BUILDING CAPACITY

BUILDING STRONG FAMILIES AND STRONG COMMUNITIES!

“The course (Parenting the Strong Willed Child) helped me to repair my relationship with my 23 month old and I see hope for the future.” Parent

“I really felt that this course (Parenting the Strong Willed Child) helped our family become a more positive environment.” Parent

“I learned a lot about fine motor development and how to develop them” Child Care Provider

“The project has established a presence within the community” Steering Committee Member

KEY RESEARCH FINDINGS

- Parents identified increased **confidence** and **skills** following participation in the Core educational opportunities.
- Parents reported improved parent child **relationships** and decreased **stress**.
- Following educational sessions regarding developmental checkups and the use of the ASQ, Public Health Nurses and multidisciplinary staff reported increased **knowledge** regarding the Ages and Stages Questionnaire and increased **confidence** in managing referrals.
- Day Care/Day Home providers reported significantly greater **confidence in managing follow-up** services after identification of a developmental delay

immediately following the educational sessions.

- Through the GAWM Steering Committee, capacity was increased to be **responsive** to specific needs of the urban and various rural communities served.

GROW ALONG WITH ME ACTIVITIES

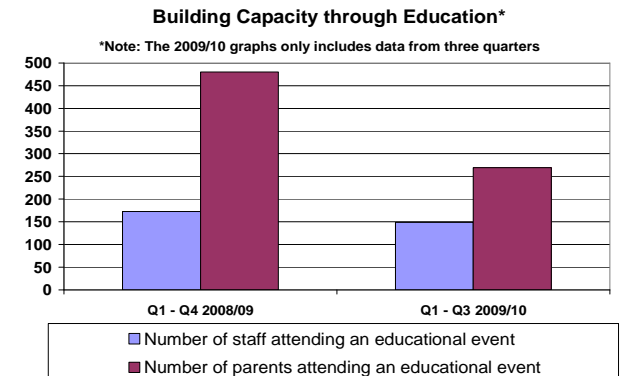
The synergistic effect of capacity building
(Ontario Prevention Clearinghouse, 2002, p 2)



The Grow Along with Me project has a strong focus on building capacity. Capacity has been developed at the individual (Parent and Staff), organizational and community level. Front-line staff now have increased knowledge, skills and resources to support parents to effectively promote their child’s early development.

Based on a review of literature and with input from local stakeholders, key areas for identified capacity building were identified. Early speech and language, social/ emotional and motor development were targeted.

Staff from multiple partners jointly planned and offered region-wide courses for both parents and community agency staff. Core training and community courses have been instrumental in providing parents with information and skills to be able to positively support their child’s early development. Access to child care during these sessions was critical to their success.



REPORTS FOR MORE INFORMATION

Building Capacity: A Foundation for Success

Service Provider Survey

Quarterly Reports